



Aspire Curriculum Knowledge Organiser: What a Wonderful World

Big Question: Where in the world am I?

Year 1

Autumn



Buckingham Palace
in London



Edinburgh Castle in
Edinburgh



What? Key Knowledge Takeaways

The United Kingdom is made up of England, Wales, Scotland and Northern Ireland.

London is the capital city of England.

Cardiff is the capital city of Wales.

Edinburgh is the capital city of Scotland.

Belfast is the capital city of Northern Ireland.

How they are similar ____

How they are different ____

I live in ____ and 'school name' is in the town 'location'

The 4 seasons are

Autumn, Winter, Spring, and Summer.

The weather is different depending on the season.

Where? Famous Landmarks?

London is the capital city of England



In London there are famous landmarks like Big Ben, Buckingham Palace and the London Eye.

Cardiff is the capital city of Wales



In Cardiff there are famous landmarks like Cardiff Castle and Cardiff Stadium.

Edinburgh is the capital city of Scotland.



In Edinburgh there are famous landmarks like Edinburgh Castle, the Royal Mile and Arthur's Seat.

Belfast is the capital city of Northern Ireland.



In Belfast there are famous landmarks like Belfast Zoo, Belfast Castle and this is where the Titanic was built.

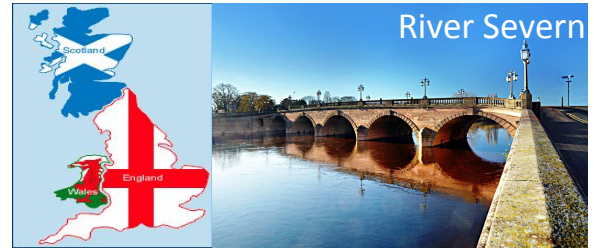
Key Vocabulary

Definition

Town	An area with streets, houses and buildings that is larger than a village but usually smaller than a city.
Capital	The city where the government of the country is.
City	A large and important town where many people live and work.
Country	A large area of land where people live under the same government.
Weather	The weather can be sun, rain, cloud, wind, thunder, mist, fog, hail... It changes based on your location and the seasons.
Map	A drawing or picture showing some features of an area.
Aerial photograph	A photo that is taken looking down.
Feature	Important places or things in a given location e.g. church, hospital, post box, park...

Symbols

church	woodland	hospital	river	school	picnic site	campsite	parking	Information centre



What? Key Knowledge Takeaways

To know:

- The 4 UK countries (England, Northern Ireland, Scotland and Wales) and their capital cities.
- The waters that surround the UK are the: North Sea, Irish Sea, Celtic Sea, North Atlantic Ocean, English Channel.
- That Snowdonia is a mountain range in Wales within the county of Gwynedd.
- That Wales has a population of around 3,315,000; there are 6 official cities (Bangor, Cardiff, Newport, St Asaph, St Davids and Swansea); the main economic activity is tourism and public services, previously coal and slate mining.
- The different features of a river's journey are: source, tributary, flood plain, meander, ox bow lake, delta and mouth.
- There are 3 stages to a river and they are Upper, Middle and Lower Courses.
- The River Severn's source is in Plynlimon (Cambrian Mountains) and its mouth leads to the Bristol Channel.

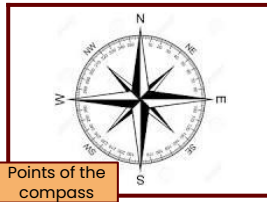
To use the following skills:

- Read maps (including digital) to locate countries and cities of the UK as well as a counties surrounding their local area.
- Use and identify the four compass points
- Identify, understand and use specific features/symbols from given four figure grid references.

Where? Famous Places

The United Kingdom	Also known as the British Isles and Great Britain, the United Kingdom is made up of the four countries of England, Scotland, Wales and Northern Ireland.
Staffordshire, Warwickshire, Worcestershire, Herefordshire, Shropshire	The counties surrounding the West Midlands.
London	The capital city of England.
Cardiff	The capital city of Wales.
Edinburgh	The capital city of Scotland.
Belfast	The capital city of Northern Ireland.
Snowdon	The tallest mountain in Wales.
The River Severn	The River Severn is the longest river in Great Britain. It flows through Wales and England.

Key Vocabulary	Definition
Physical	Physical features are natural objects such as rivers and mountains.
Human	Human features are things that are built by humans such as bridges and roads.
Culture	This is the shared behaviour by a group of people which includes things like food, language, clothing, music and art.
Grid References	These allow someone to mark a place on a map by referring to vertical and horizontal lines.
Compass	A compass is a tool for finding direction with 4 main points, North, East, South and West.
Topography	Study of the earth's surface. Includes changes in the surface such as mountains and valleys as well as features such as rivers and roads.



Points of the compass



Map of Japan



Map of New Zealand

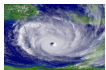
What? Key Knowledge Takeaways

A **volcano** is a landform (usually a mountain) where molten rock erupts through the surface of the planet.



An **earthquake** is a sudden violent shaking of the ground, typically causing great destruction, as a result of movements within the earth's crust or volcanic action.

A **hurricane** is a large rotating storm with high speed winds that forms over warm waters in tropical areas.



A **tsunami** is a series of waves caused by earthquakes or undersea volcanic eruptions.



Who and Where? Famous People or Places

Ring of Fire	The Ring of Fire is a major area in the basin of the Pacific Ocean where many earthquakes and volcanic eruptions occur.
Charles Francis Richter	Founded the Richter scale. This is a numerical scale that measures the magnitude (size) of an earthquake on a scale out of 10.
Tropic of Cancer and the Tropic of Capricorn	The Tropic of Cancer is the most northerly circle of latitude on Earth at which the sun can be directly overhead. The Tropic of Capricorn is the most southerly circle of latitude where the sun can be directly overhead.
Arctic and Antarctic Circle	The Arctic circle is an imaginary line drawn around the northern part of the world. The Antarctic circle is an imaginary line drawn around the southern part of the world.
Japan	Japan is located in the ring of fire therefore they suffer from many earthquakes, typhoons, tsunamis and volcanic eruptions.
New Zealand	New Zealand is located on top of two tectonic plates (Pacific and Australian plates) which causes them to have frequent earthquakes and volcanic eruptions.

Key Vocabulary

Definition

Longitude	Lines of longitude run from the top of the Earth to the bottom.
Latitude	Lines of latitude circle the Earth in an east-west direction.
Hemispheres	The equator is an imaginary line that runs through the middle of the Earth.
Equator	The equator splits the Earth into two parts; the Northern and Southern hemispheres.
Natural disaster	A natural disaster is a natural event such as a flood, earthquake, or hurricane that causes great damage or loss of life.
Grid reference	A grid reference is a map reference which indicates a location in terms of a series of vertical (up and down) and horizontal (left to right) grid lines identified by numbers.

