

What? (Key Knowledge)

We need light to be able to see things. Light travels in a straight line. When light hits an object, it is reflected (bounces off). If the reflected light hits our eyes, we can see the object. Some surfaces and materials reflect light well. Other materials do not reflect light well. Reflective surfaces and materials can be very useful.

The surfaces that **reflect light** best are smooth, shiny and flat.

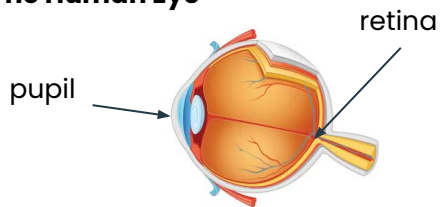
Mirrors **reflect light** very well, so they create a clear image. An image in a mirror appears to be reversed. For example, if you look in a mirror and raise your right hand, the mirror image appears to raise its left hand.

The **pupils** control the amount of **light** entering the eyes. If too much **light** enters, then it can damage the **retina**.

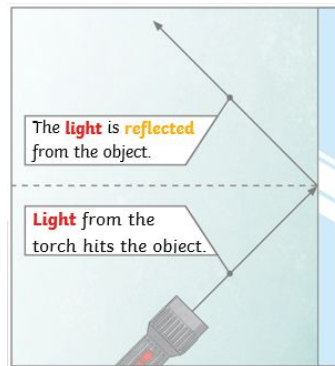
A **shadow** is caused when **light** is blocked by an **opaque** object. A **shadow** is larger when an object is closer to the **light** source. This is because it blocks more of the **light**.

Diagrams and Symbols

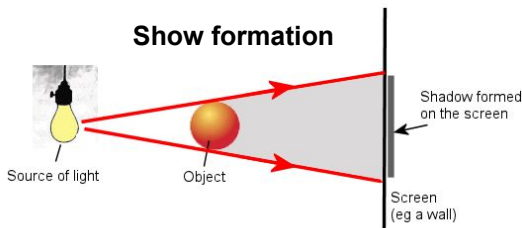
The Human Eye



Reflection



Show formation



Key Vocabulary

Definition

light	A form of energy that travels in a wave from a source.
light source	An object that makes its own light .
dark	Dark is the absence of light .
reflection	The process where light hits the surface of an object and bounces back into our eyes.
reflect	To bounce off.
reflective	A word to describe something which reflects light well.
ray	Waves of light are called light rays .
pupil	The black part of the eye which lets light in.
retina	A layer at the very back of the eye. The retina takes the light the eye receives. It then changes it into nerve signals to send to the brain.
shadow	An area of darkness where light has been blocked.
opaque	Describes objects that do not let any light pass through them.
translucent	Describes objects that let some light through, but scatter the light so we can't see through them properly.
transparent	Describes objects that let light travel through them easily, meaning that you can see through the object.